

## Seat Cover Installation

First separate the new left hand and right hand seat foams and seat covers. They are slightly different and should be marked left hand and right hand for positioning.

Keep one of the seats together to use as an example to check your work against until the first seat is completely recovered. Do not worry if the headrests do not come out at this stage.

Turn the seat upside down on the work bench and you will see that the seat tipping release mechanism is held in place by four Phillips screws (Fig. 32). Remove these screws, if possible, as they are generally rusted solid. If necessary drill the screw heads off to release the handle.

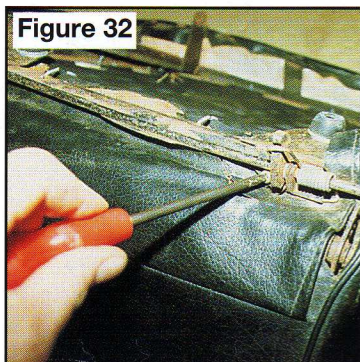


Figure 32

You will now see that the rear of the seat back cover is stuck to the frame.

Peel away and you will find some more flaps clipped to the frame by seat clips (Fig. 33). Remove these with your flat ended screwdriver and note how these flaps are situated. Now go to the bottom of the seat back side skirts which you will note are fairly solid.

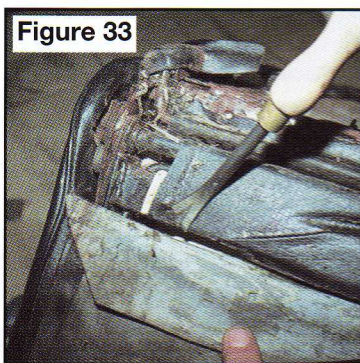


Figure 33

At the bottom the cover has cardboard inserts with metal plates attached (Fig. 34), which in turn are clipped into brackets on the seat frame.



Figure 34

To release these, pull down and they will come free. Pull the cover free from the bottom of the seat and then from the front pull out the internal flap which is inserted through the foam cushion.

The cover can now be pulled up (Fig. 35) until you come to the headrest which should still be in place. Peel the cover up and over the headrest stalk and you will see a spring clip coming out of the stalk. Press this in with a screwdriver and the headrest will pull out. Remove the seat back foam from the frame.



Figure 35

Now you can remove the base cover assembly. Note how it is held onto the frame by seat clips which can now be removed (Fig. 36).

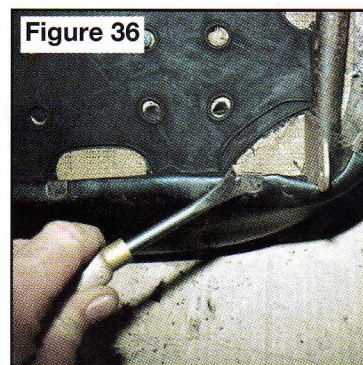


Figure 36

Peel the unclipped skirt up and over to see how the cover is attached to the foam cushion (Fig. 37). The frame foam wrap can also be removed as can the seat diaphragm (Fig. 38). Finish dismantling by inspecting the frame and carry out any repairs etc. before cleaning and painting.

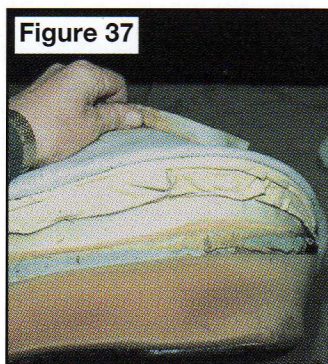


Figure 37



Figure 38

## Fitting A New Seat Base Cover

We are assuming that along with the new seat covers, you will also be fitting new seat base diaphragms, base and seat back foam cushions. It may be necessary to also fit new seat back straps, but usually these are in reasonable condition and may only need repairing if they have lost tension.